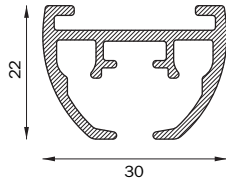


5600

profile

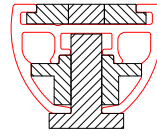
5600
492 gr/m



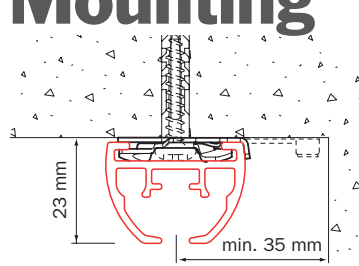
bending

radius
R 20 (1015)
R 30 (1015)
R > 100 (1018)

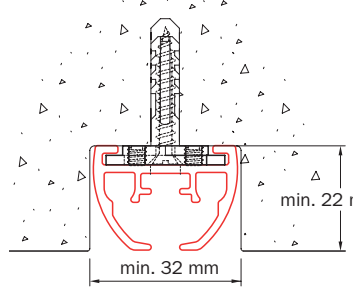
filler position



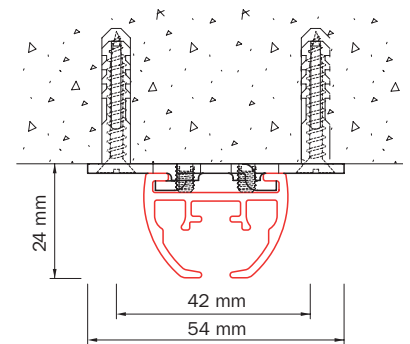
Mounting



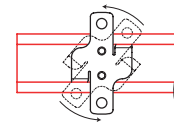
ceiling mounting with ceiling mounting clamp 6050: leave space to allow rotation of ceiling mounting clamp



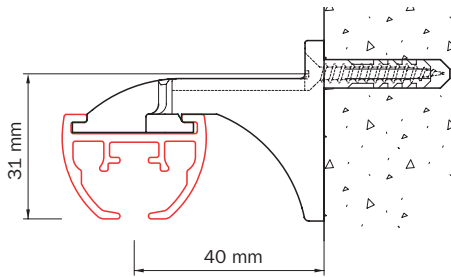
recessed mounting to or in ceiling with bracket 6055-2000
- when mounting in ceiling, take into account the wider pulleys
- curved systems: bend profile first then use as template for the rebate
- pre-drilling of profile by Goelst NL



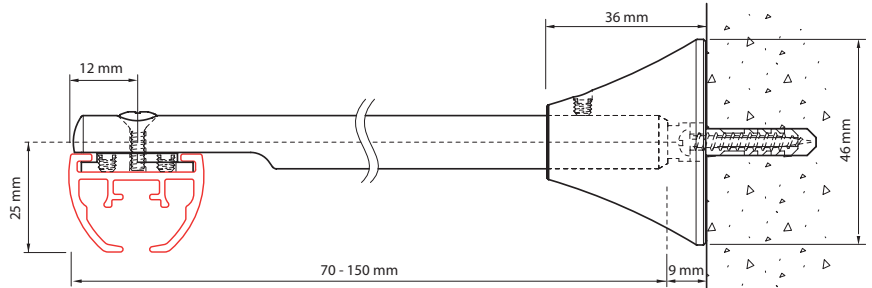
ceiling mounting with ceiling bracket 6055-1000



assembly:
rotate in place and secure



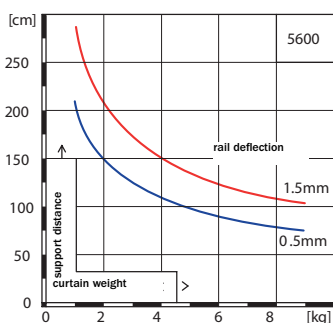
wall mounting with wall bracket 6051



wall mounting with trimmable extension bracket 6017

G-Standard

5600



Exploded view

5600

